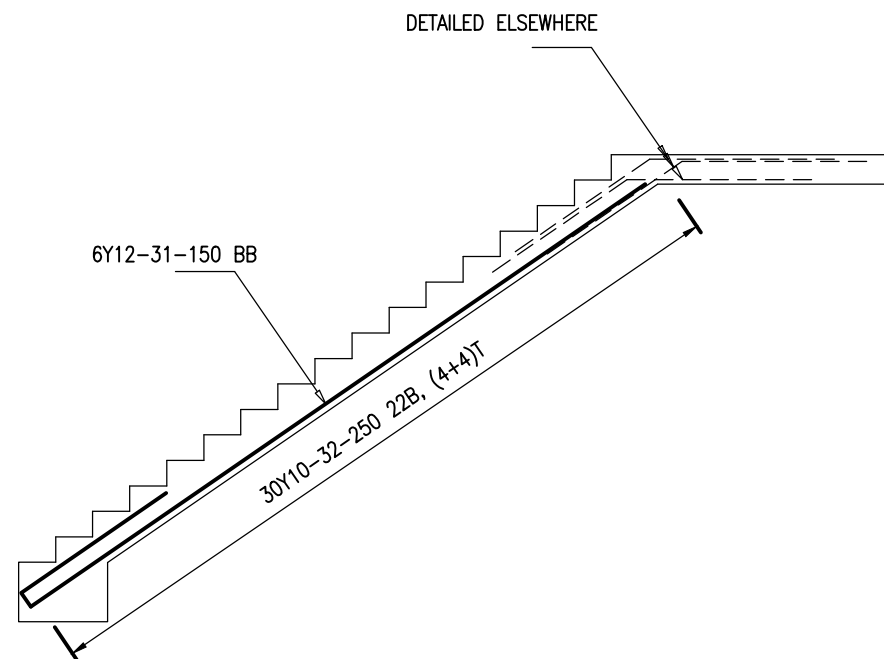


**NOTE:**

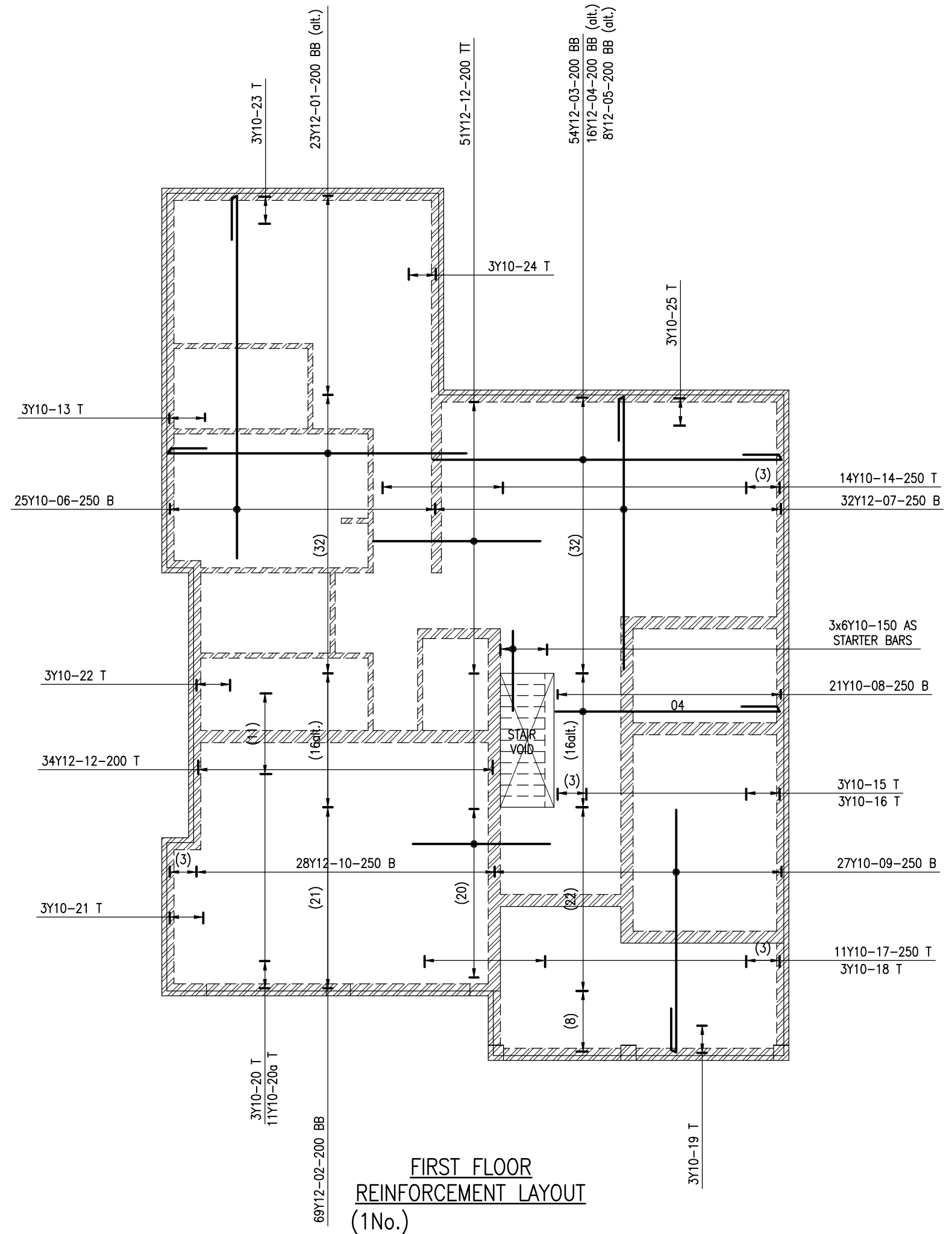
- 1.0 THIS DRAWING IS TO BE READ IN CONJUNCTION WITH ALL RELEVANT DRAWINGS AND SCHEDULES
- 2.0 ALLOWABLE BEARING PRESSURE TO ALL FOUNDATIONS IS 75kPa. CONTRACTOR TO ALLOW FOR TESTING.
- 3.0 CONCRETE STRENGTH TO BE AS FOLLOWS: FOOTINGS, SURFACE BEDS, - 20MPa, SUSPENDED SLABS, BEAMS - 25MPa
- 4.0 COVER TO ALL REINFORCEMENT SHALL BE AS FOLLOWS: FOUNDATIONS - 50mm, BEAMS - 30mm, SLABS - 25mm.
- 5.0 NO CONCRETE SHALL BE POURED WITHOUT THE ENGINEER'S APPROVAL

**LEGEND:**

- BB - BOTTOM OF BOTTOM LAYER
- B - TOP OF BOTTOM LAYER
- TT - TOP OF TOP LAYER
- T - BOTTOM OF TOP LAYER
- EF - EACH FACE
- alt. - ADJACENT BARS ALTERNATING
- OF/IF - OUTER / INNER FACE
- AS - AS SHOWN



**STAIR REINFORCEMENT**  
(1No.)



**FIRST FLOOR REINFORCEMENT LAYOUT**  
(1No.)

HOUSE MULEYA  
 PROPOSED MAIN HOUSE ON  
 ERF 6520 BONZA VIEWS, EAST LONDON  
 DWG No. 1910-04  
 FIRST FLOOR REINFORCEMENT LAYOUT  
 JUNE 2019