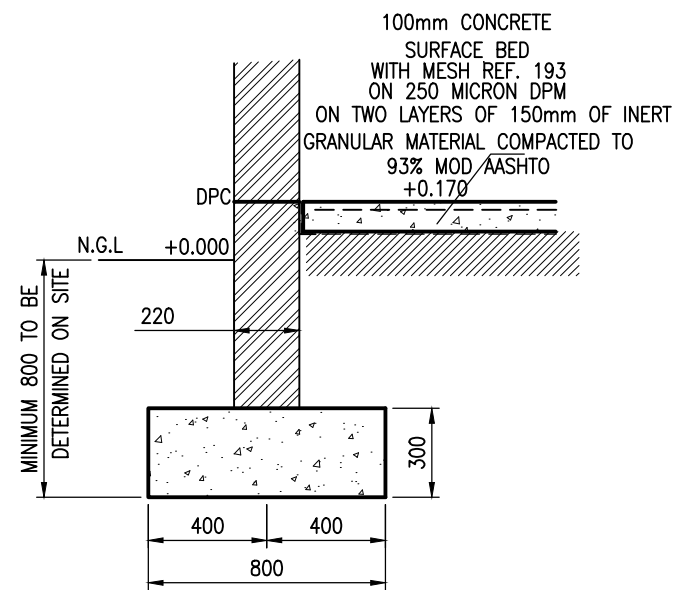
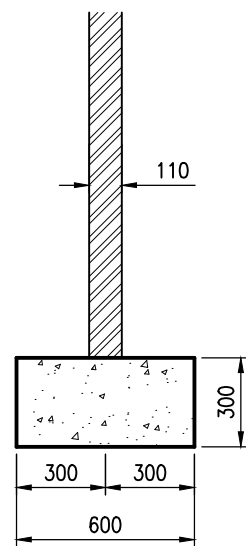


NOTE:

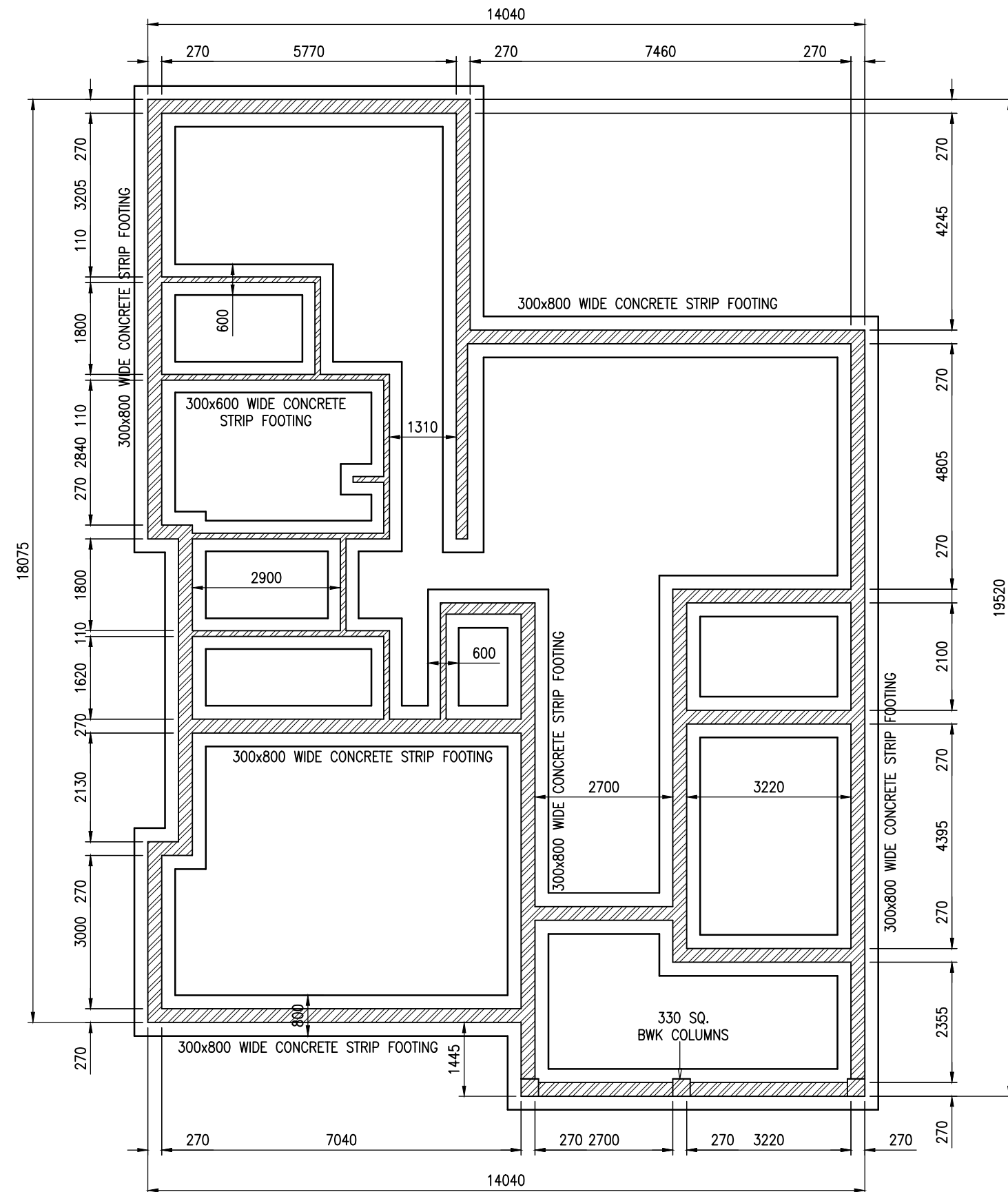
- 1.0 THIS DRAWING IS TO BE READ IN CONJUNCTION WITH ALL RELEVANT DRAWINGS AND SCHEDULES
- 2.0 ALLOWABLE BEARING PRESSURE TO ALL FOUNDATIONS IS 75kPa. CONTRACTOR TO ALLOW FOR TESTING.
- 3.0 CONCRETE STRENGTH TO BE AS FOLLOWS: FOOTINGS, SURFACE BEDS, - 20MPa, SUSPENDED SLABS, BEAMS - 25MPa
- 4.0 COVER TO ALL REINFORCEMENT SHALL BE AS FOLLOWS: FOUNDATIONS - 50mm, BEAMS - 30mm, SLABS - 25mm.
- 5.0 NO CONCRETE SHALL BE POURED WITHOUT THE ENGINEER'S APPROVAL



300x800 WIDE R.C STRIP FOOTING
1:25



300x600 WIDE R.C STRIP FOOTING
1:25



FOUNDATION LAYOUT
1:100

HOUSE MULEYA
 PROPOSED MAIN HOUSE ON
 ERF 6520 BONZA VIEWS, EAST LONDON
 DWG No. 1910-01
 FOUNDATIONS LAYOUT
 JUNE 2019