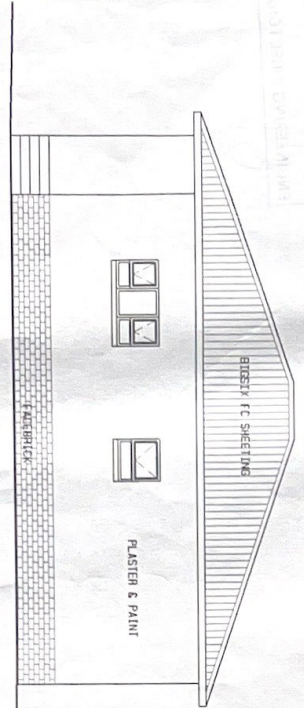
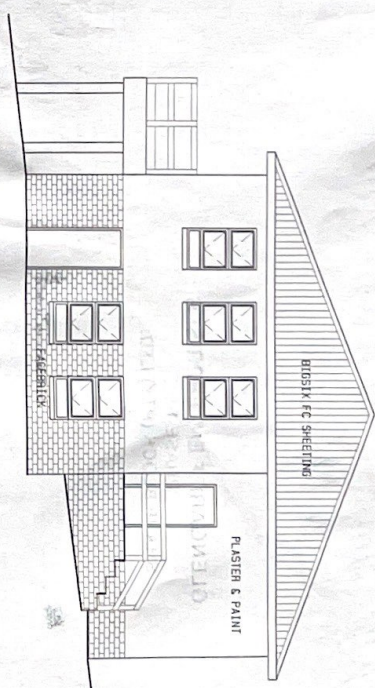


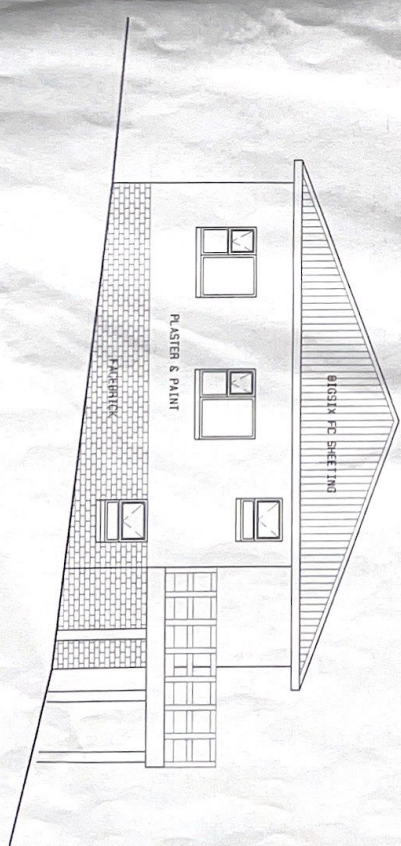
EAST ELEVATION



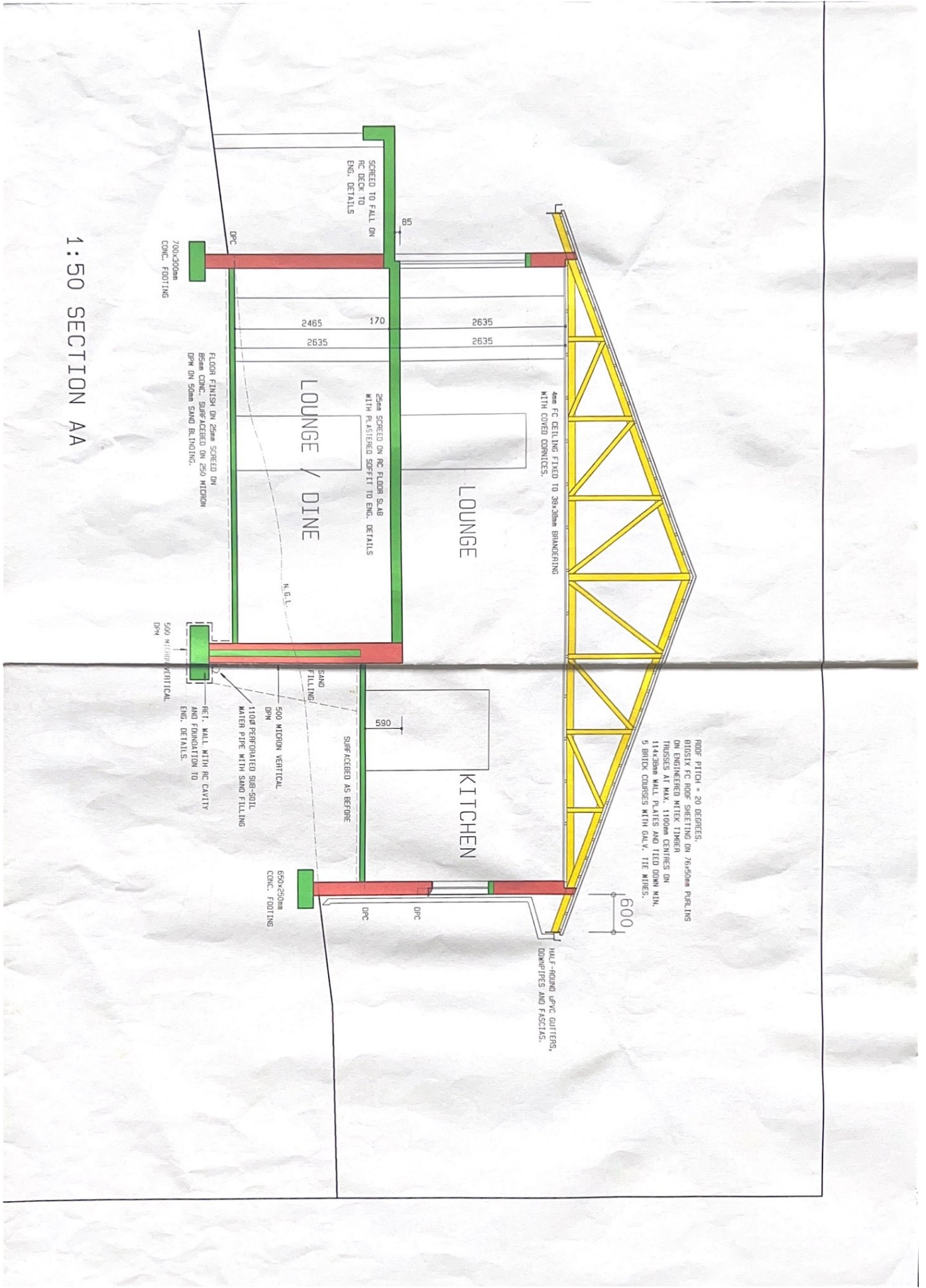
WEST ELEVATION



NORTH ELEVATION



SOUTH ELEVATION



1:50 SECTION AA

SCREED TO FALL ON RC DECK TO ENG. DETAILS

700x300mm CONC. FOOTING

FLOOR FINISH ON 25mm SCREED ON BEAM CONC. SURFACED ON 500 MICRON DPM ON 50mm SAND BLINDING.

LOUNGE / DINE

25mm SCREED ON RC FLOOR SLAB WITH PLASTERED SOFFIT TO ENG. DETAILS

LOUNGE

4mm FC CEILING FIXED TO 39x39mm BRACKETING WITH COVER JOINTS.

N.G.L.

500 MICRON VERTICAL DPM

REL. WALL WITH RC CAVITY AND FOUNDATION TO ENG. DETAILS.

110Ø PERFORATED SIG-SOIL WATER PIPE WITH SAND FILLING

500 MICRON VERTICAL DPM

SURFACED AS BEFORE

KITCHEN

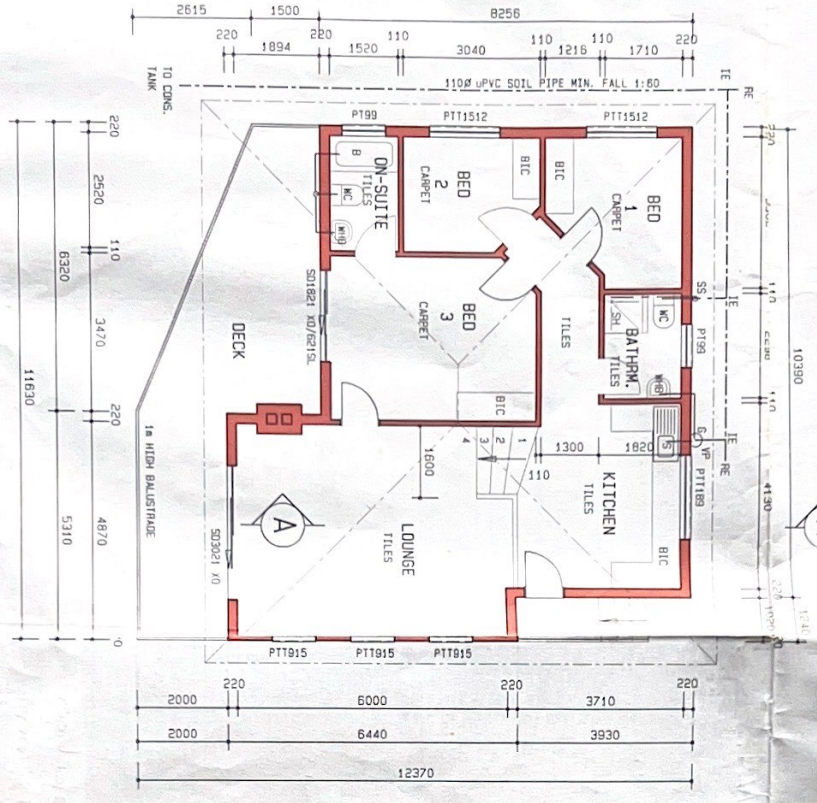
550x250mm CONC. FOOTING

ROOF PITCH = 20 DEGREES.
 810x16 FC ROOF SHEETING ON 76x50mm PURLINS ON ENGINEERED MITEX TIMBER TRUSSES AT MAX. 1100mm CENTRES ON 114x28mm WALL PLATES AND TIED DOWN MIN. 5 BRICK COURSES WITH GALV. TIE WIRES.

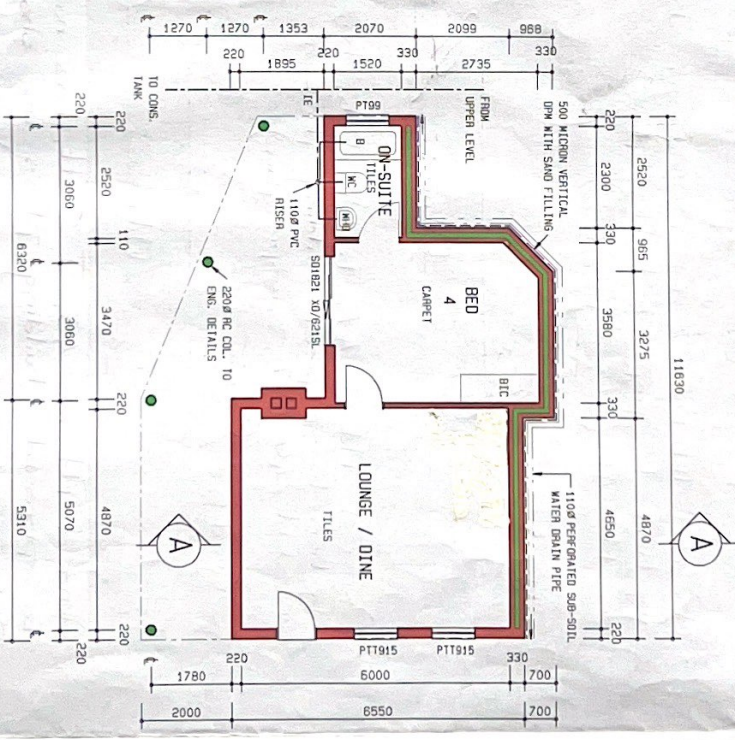
HALF-ROUND DPC GUTTERS, DOWNPIPES AND FASCIAS.

600

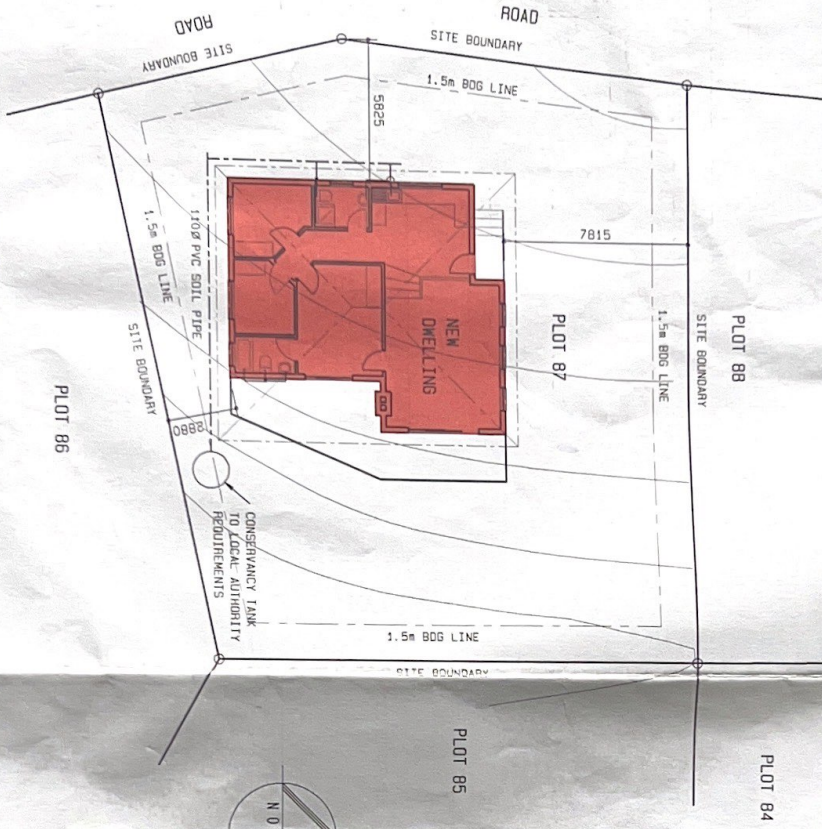
1:100 GROUND FLOOR PLAN



1:100 LOWER GROUND FLOOR PLAN



1:200 SITE PLAN



TOTAL FLOOR AREA = 161.00m²
 SITE AREA = 553 m²
 COVERAGE = 23.30%

AMATOLE DISTRICT MUNICIPALITY
 ENGINEERING DIRECTORATE
 BUILDING PLAN No. 54/02/03
 APPROVED SUBJECT TO CONDITIONS
 CONTAINED IN ATTACHED LETTER
 DATE 20/7/04