

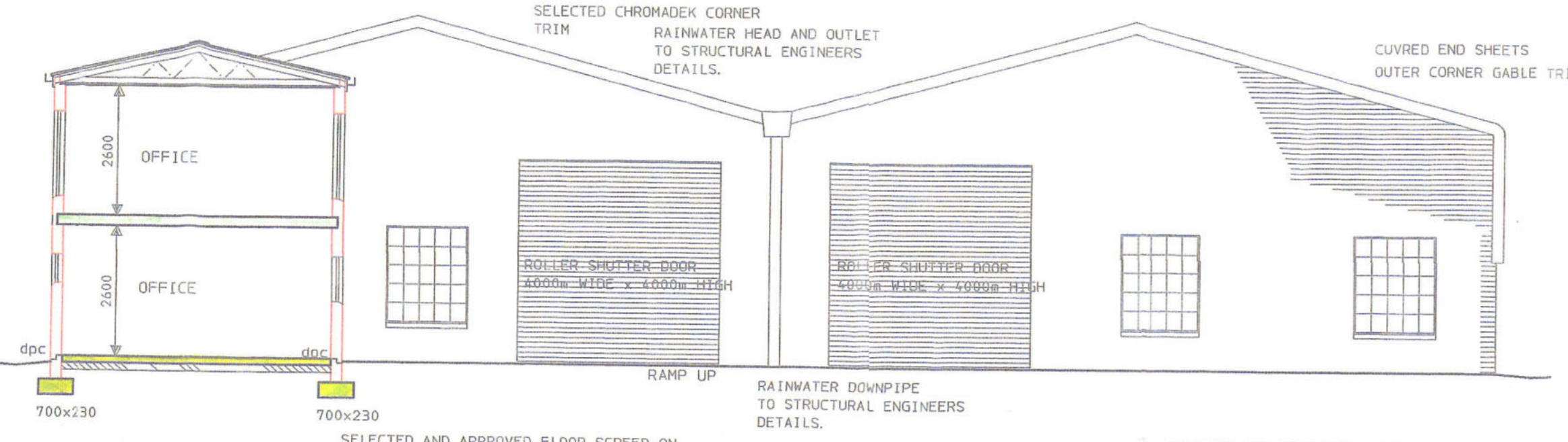
All dimensions and levels to be checked on site before any work is put in hand.

REVISIONS			
Number	Date	Initials	Details

70683

[Signature] 19/07/2005

SELECTED CHROMADEK 1BR PROFILE ROOFING SHEETS OR EQUAL APPROVED, WITH FLUTES TURNED UP AT HEAD AND DOWN INTO GUTTER, ON 75x50mm PURLINS AT 850mm CENTRES ON SELECTED PREFABRICATED ROOF TRUSSES AT 750mm CENTRES. WITH APPROVED INSULATION. PITCH 12.5°.
6mm CLADDIT FIBRE CEMENT CEILING WITH 12x50mm COVER STRIPS ON 50x38mm BRANDING AT 400mm CENTRES WITH 55mm FIBRE CEMENT COVER CORNICE.
PROVIDE ALL RIDGE CAPPINGS, GABLE TRIMS, CORNER TRIMS AND SIDE CLADDING WITH POLYCLOSERS, POLYSTRIP SEALERS AND SERATED EAVES CLOSERS, FOR DUST PROOFING TO ROOF.
220x38mm TIMBER FASCIA WITH 125mm GUTTER WITH 75mm DOWNPIPES.
SELECTED AND APPROVED FACEBRICK PANELS WITH GALVANISED WIRE TIES, APPLY FLINTCOTE OR EQUAL APPROVED TO INNER SKIN OF EXTERNAL WALLS
CONCRETE DISHED STORMWATER CHANNEL.



SECTION 2 - 2

SELECTED CHROMADEK 1BR PROFILE ROOFING SHEETS OR EQUAL APPROVED, WITH FLUTES TURNED UP AT HEAD AND DOWN INTO GUTTER, ON 75x50mm PURLINS AT 850mm CENTRES ON SELECTED PREFABRICATED ROOF TRUSSES AT 750mm CENTRES. WITH APPROVED INSULATION. PITCH 12.5°.
6mm CLADDIT FIBRE CEMENT CEILING WITH 12x50mm COVER STRIPS ON 50x38mm BRANDING AT 400mm CENTRES WITH 55mm FIBRE CEMENT COVER CORNICE.
PROVIDE ALL RIDGE CAPPINGS, GABLE TRIMS, CORNER TRIMS AND SIDE CLADDING WITH POLYCLOSERS, POLYSTRIP SEALERS AND SERATED EAVES CLOSERS, FOR DUST PROOFING TO ROOF.
220x38mm TIMBER FASCIA WITH 125mm GUTTER WITH 75mm DOWNPIPES.
SELECTED AND APPROVED FACEBRICK PANELS WITH GALVANISED WIRE TIES, APPLY FLINTCOTE OR EQUAL APPROVED TO INNER SKIN OF EXTERNAL WALLS
CONCRETE DISHED STORMWATER CHANNEL.

SELECTED CHROMADEK 1BR PROFILE ROOFING SHEETS OR EQUAL APPROVED, ON STEEL PURLINS ON STEEL STRUCTURE WITH SISALATION 420 INSULATION ON APPROVED STRAINING WIRES, OR EQUAL APPROVED. ALL DONE IN ACCORDANCE WITH MANUFACTURERS INSTRUCTIONS AND SPECIFICATIONS. PITCH 15°.
PROVIDE ALL RIDGE CAPPINGS, GABLE TRIMS, CORNER TRIMS AND SIDE CLADDING WITH POLYCLOSERS, POLYSTRIP SEALERS AND SERATED EAVES CLOSERS, FOR DUST PROOFING TO ROOF.
All Steelwork To Structural Engineers Detail

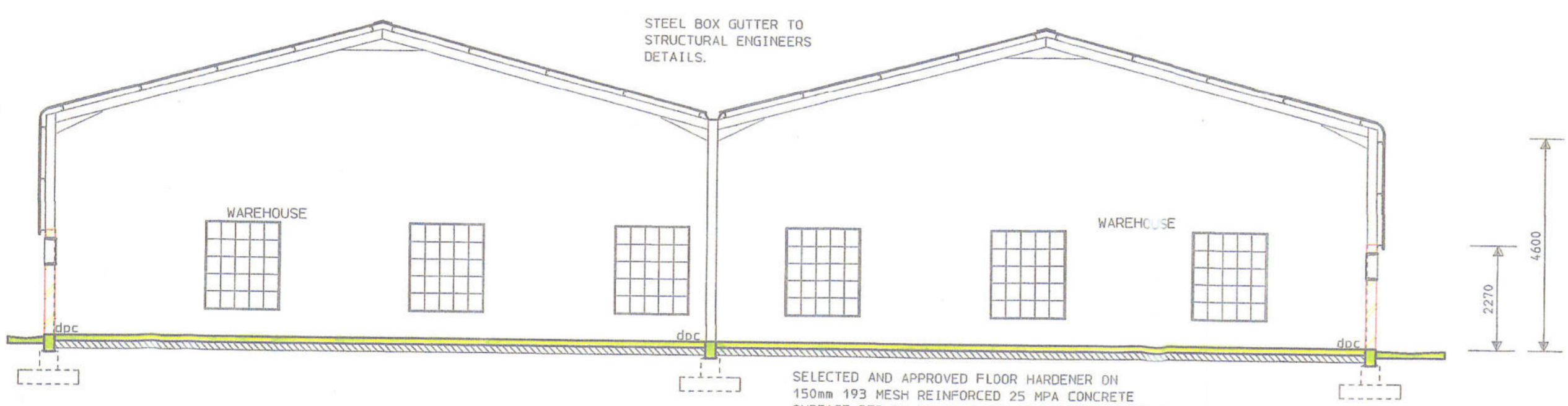
SELECTED CHROMADEK 1BR PROFILE ROOFING SHEETS OR EQUAL APPROVED, ON STEEL PURLINS ON STEEL STRUCTURE WITH SISALATION 420 INSULATION ON APPROVED STRAINING WIRES, OR EQUAL APPROVED. ALL DONE IN ACCORDANCE WITH MANUFACTURERS INSTRUCTIONS AND SPECIFICATIONS. PITCH 15°.
PROVIDE ALL RIDGE CAPPINGS, GABLE TRIMS, CORNER TRIMS AND SIDE CLADDING WITH POLYCLOSERS, POLYSTRIP SEALERS AND SERATED EAVES CLOSERS, FOR DUST PROOFING TO ROOF.
All Steelwork To Structural Engineers Detail

PROVIDE POLYCLOSERS AND POLYSTRIP SEALERS FOR DUST PROOFING TO ROOF AND SIDE CLADDING.

CURVED END SHEETS

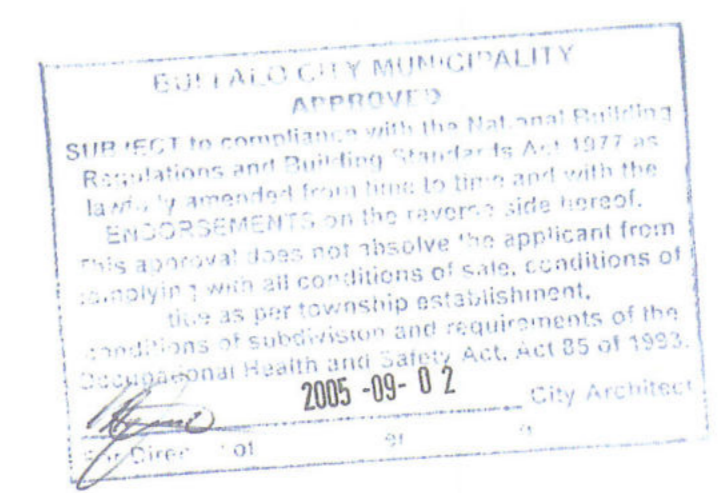
SELECTED CHROMADEK 1BR PROFILE CLADDING ON SHEETING RAILS FIXED TO STEEL STANCHIONS TO ENGINEERS DETAIL
DRIP FLASHING
BITUMEN IMPREGNATED FLEXCELL BETWEEN ALL BRICKWORK AND STANCHIONS
SELECTED AND APPROVED FACEBRICK PANELS WITH GALVANISED WIRE TIES, APPLY FLINTCOTE OR EQUAL APPROVED TO INNER SKIN OF EXTERNAL WALLS.

CONCRETE DISHED STORMWATER CHANNEL



SECTION 1 - 1

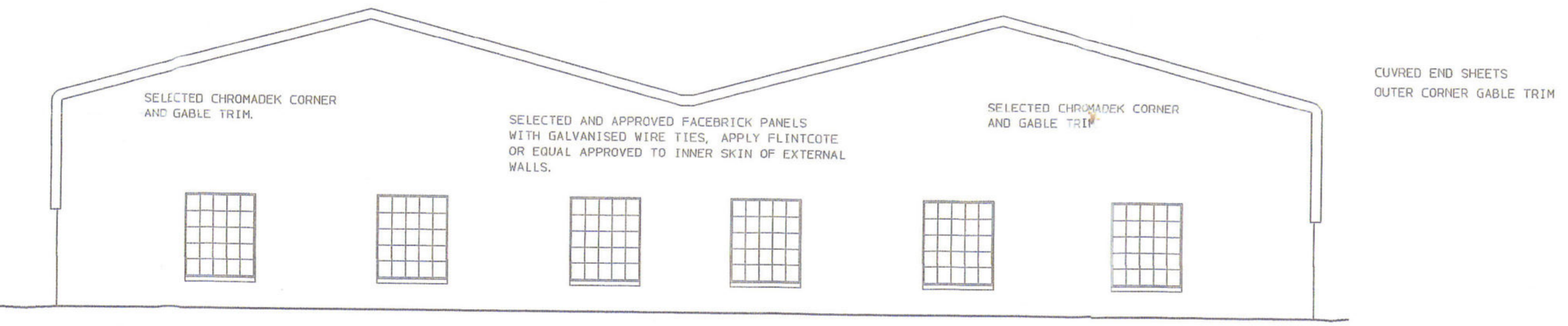
SELECTED AND APPROVED FLOOR HARDENER ON 150mm 193 MESH REINFORCED 25 MPA CONCRETE SURFACE BED ON GUNPLAS USB GREEN DPC SHEETING ON 50mm SAND BED ON WELL CONSOLIDATED FILLING. ALL RC STUB COLUMNS, GROUND BEAMS, FLOOR SLABS, BEAMS AND BASES ETC. ALL TO STRUCTURAL ENGINEERS DETAILS.



CURVED END SHEETS

SELECTED CHROMADEK 1BR PROFILE CLADDING ON SHEETING RAILS FIXED TO STEEL STANCHIONS TO ENGINEERS DETAIL
DRIP FLASHING
BITUMEN IMPREGNATED FLEXCELL BETWEEN ALL BRICKWORK AND STANCHIONS

CONCRETE DISHED STORMWATER CHANNEL



NORTH ELEVATION

Copyright reserved

DRIVER WEBBER ARCHITECTS
P.O. BOX 11023
SOUTHERNGOOD 5213
EAST LONDON
Tel. 0431-29733
Fax. 0431-29742

DUNASH PROPERTIES cc.
Client

PROPOSED WAREHOUSE AND OFFICES ON ERF 16061 ARCADIA.
Project

ELEVATIONS SECTIONS
Drawing

1:100 Scale	MAR 2005 Date	cah Drawn	Checked
0508:01 Project No.	102 Drawing No.	A Revision	