

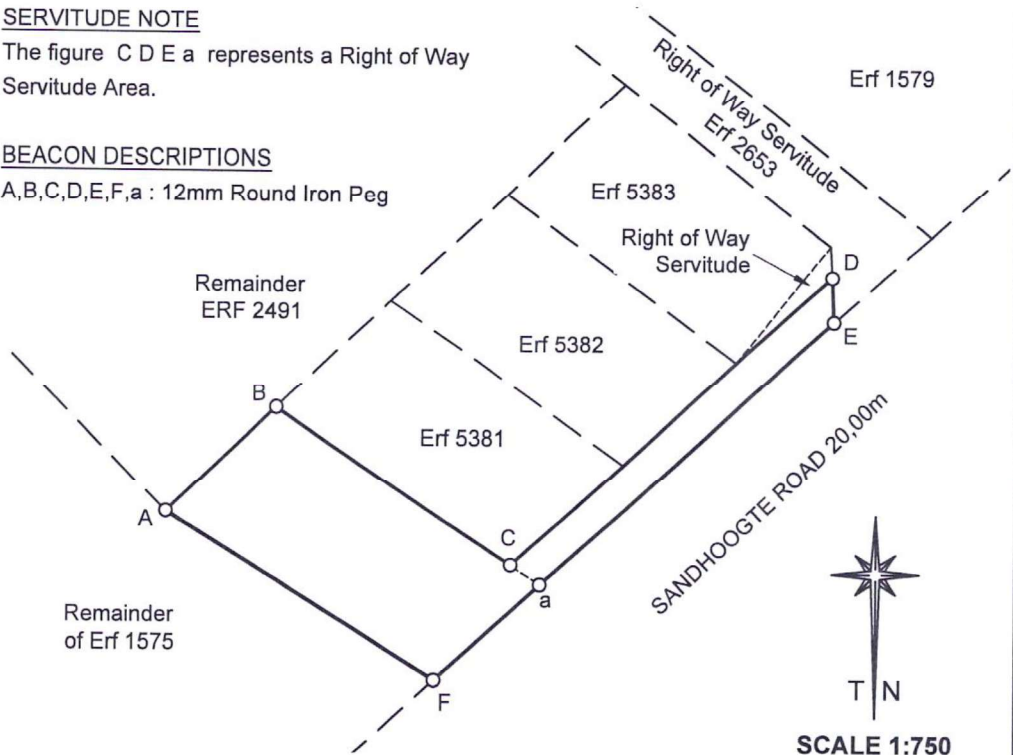
SIDES Metres		ANGLES OF DIRECTION	CO-ORDINATES Y System: WG 23° X			S.G. No.
			Constants	±0,00	±0,00	
AB	17,53	226.47.30	A	+72 861,79	+3 769 944,69	Approved for Surveyor-General
BC	32,52	303.51.40	B	+72 849,02	+3 769 932,69	
CD	49,99	227.58.20	C	+72 822,01	+3 769 950,81	
DE	5,20	357.40.20	D	+72 784,88	+3 769 917,35	
EF	62,00	47.58.20	E	+72 784,66	+3 769 922,54	
FA	36,61	121.56.00	F	+72 830,72	+3 769 964,05	
SERVITUDE DATA						
CD	49,99	227.58.20	C			
DE	5,20	357.37.00	D			
Ea	45,67	47.58.20	E			
aC	4,12	123.51.40	a	+72 818,59	+3 769 953,11	
TERGNIET RES		3322 - 444		+75 707,82	+3 771 618,81	
ZANDHOOGTE WT		3322 - 434		+75 375,40	+3 769 892,37	

SERVITUDE NOTE

The figure C D E a represents a Right of Way Servitude Area.

BEACON DESCRIPTIONS

A,B,C,D,E,F,a : 12mm Round Iron Peg



The figure ABCDEF represents 792 square metres of land being

ERF 5380 (a portion of Erf 2491) **GROOT BRAKRIVIER**

Situated in the Municipality and Administrative District of Mossel Bay, Western Cape Province

Surveyed in May 2022 by me

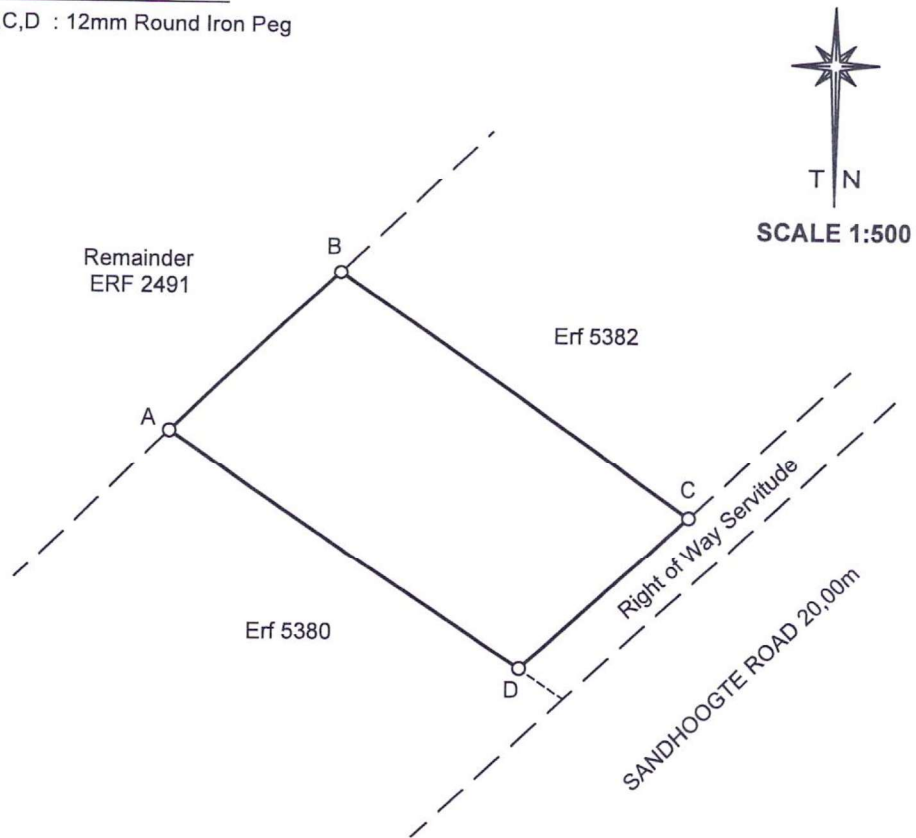
T. VISAGIE (PLS 1036)
Professional Land Surveyor

This Diagram is annexed to	The original diagram is	File No. Mos. B 137
No. :	S.G. No. 7018/1997	S.R. No. :
dated	Deed of Transfer	Comp. : AL-1ABD (3576)
i.f.o.	No. T8545/1998	
Registrar of Deeds		LPI C0510003

SIDES Metres		ANGLES OF DIRECTION	CO-ORDINATES Y System: WG 23° X			S.G. No.
			Constants	±0,00	±0,00	
AB	18,01	226.47.40	A	+72 849,02	+3 769 932,69	Approved
BC	32,78	304.47.00	B	+72 835,89	+3 769 920,36	
CD	17,56	47.58.20	C	+72 808,97	+3 769 939,06	
DA	32,52	123.51.40	D	+72 822,01	+3 769 950,81	
TERGNIET RES		3322 - 444		+75 707,82	+3 771 618,81	for Surveyor-General
ZANDHOOGTE WT		3322 - 434		+75 375,40	+3 769 892,37	

BEACON DESCRIPTIONS

A,B,C,D : 12mm Round Iron Peg



The figure ABCD
represents 566 square metres of land being

ERF 5381 (a portion of Erf 2491) **GROOT BRAKRIVIER**

Situated in the Municipality and Administrative District of Mossel Bay, Western Cape Province

Surveyed in May 2022 by me

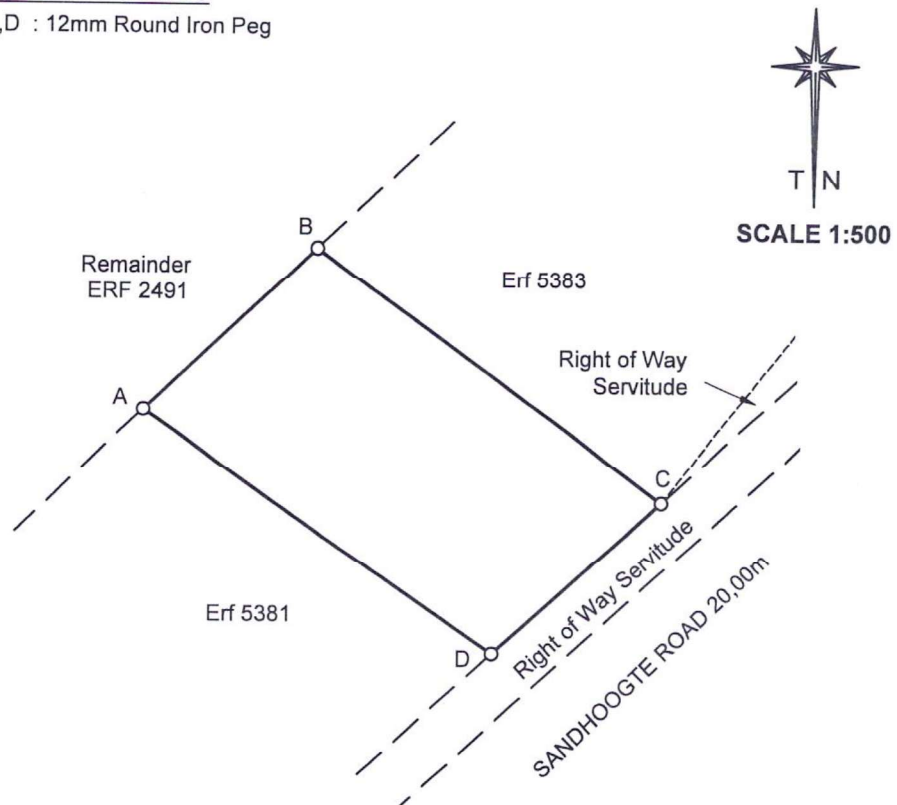
T. VISAGIE (PLS 1036)
Professional Land Surveyor

This Diagram is annexed to	The original diagram is	File No. Mos. B 137
No. :	S.G. No. 7018/1997	S.R. No. :
dated	Deed of Transfer	Comp. : AL-1ABD (3576)
i.f.o.	No. T8545/1998	
Registrar of Deeds		LPI C0510003

SIDES Metres		ANGLES OF DIRECTION	CO-ORDINATES Y System: WG 23° X			S.G. No.
			Constants	±0,00	±0,00	
A B	18,30	226.47.40	A	+72 835,89	+3 769 920,36	Approved
B C	32,99	306.08.30	B	+72 822,55	+3 769 907,83	
C D	17,58	47.58.20	C	+72 795,91	+3 769 927,29	
D A	32,78	124.47.00	D	+72 808,97	+3 769 939,06	
TERGNIET RES		3322 - 444		+75 707,82	+3 771 618,81	for Surveyor-General
ZANDHOOGTE WT		3322 - 434		+75 375,40	+3 769 892,37	

BEACON DESCRIPTIONS

A,B,C,D : 12mm Round Iron Peg



The figure A B C D
represents 577 square metres of land being

ERF 5382 (a portion of Erf 2491) **GROOT BRAKRIVIER**

Situated in the Municipality and Administrative District of Mossel Bay, Western Cape Province

Surveyed in May 2022 by me

T. VISAGIE (PLS 1036)
Professional Land Surveyor

This Diagram is annexed to	The original diagram is	File No. Mos. B 137
No. :	S.G. No. 7018/1997	S.R. No. :
dated	Deed of Transfer	Comp. : AL-1ABD (3576)
i.f.o.	No. T8545/1998	
Registrar of Deeds		LPI C0510003

SIDES Metres		ANGLES OF DIRECTION	CO-ORDINATES Y System: WG 23° X			S.G. No.
		Constants ±0,00			±0,00	Approved for Surveyor-General
A B	18,42	226.47.40	A	+72 822,55	+3 769 907,83	
B C	30,31	307.22.10	B	+72 809,12	+3 769 895,22	
C D	3,74	357.40.20	C	+72 785,04	+3 769 913,61	
D E	14,84	47.58.20	D	+72 784,88	+3 769 917,35	
E A	32,99	126.08.30	E	+72 795,91	+3 769 927,29	
SERVITUDE DATA						
E C	17,47	218.28.40				
C D	3,74	357.40.20				
D E	14,84	47.58.20				
TERGNIET RES		3322 - 444	+75 707,82	+3 771 618,81		
ZANDHOOGTE WT		3322 - 434	+75 375,40	+3 769 892,37		



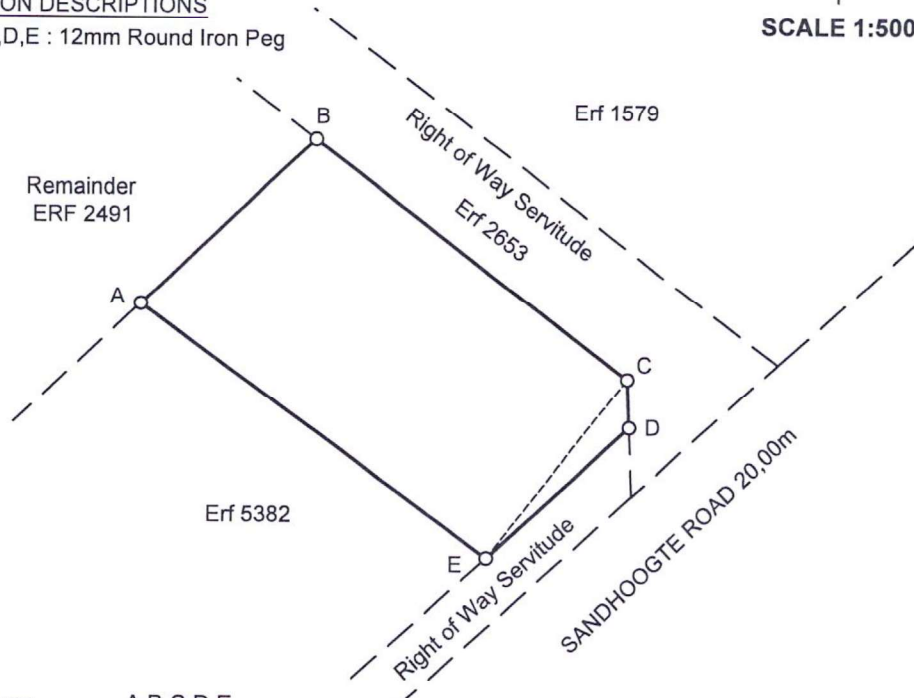
SCALE 1:500

SERVITUDE NOTE

The figure C D E represents a Right of Way Servitude Area.

BEACON DESCRIPTIONS

A,B,C,D,E : 12mm Round Iron Peg



The figure A B C D E represents 585 square metres of land being

ERF 5383 (a portion of Erf 2491) **GROOT BRAKRIVIER**

Situated in the Municipality and Administrative District of Mossel Bay, Western Cape Province

Surveyed in May 2022 by me

T. Visagie
T. VISAGIE (PLS 1036)
Professional Land Surveyor

This Diagram is annexed to	The original diagram is	File No. Mos. B 137
No. :	S.G. No. 7018/1997	S.R. No. :
dated	Deed of Transfer	Comp. : AL-1ABD (3576)
i.f.o.	No. T8545/1998	
Registrar of Deeds		LPI C0510003

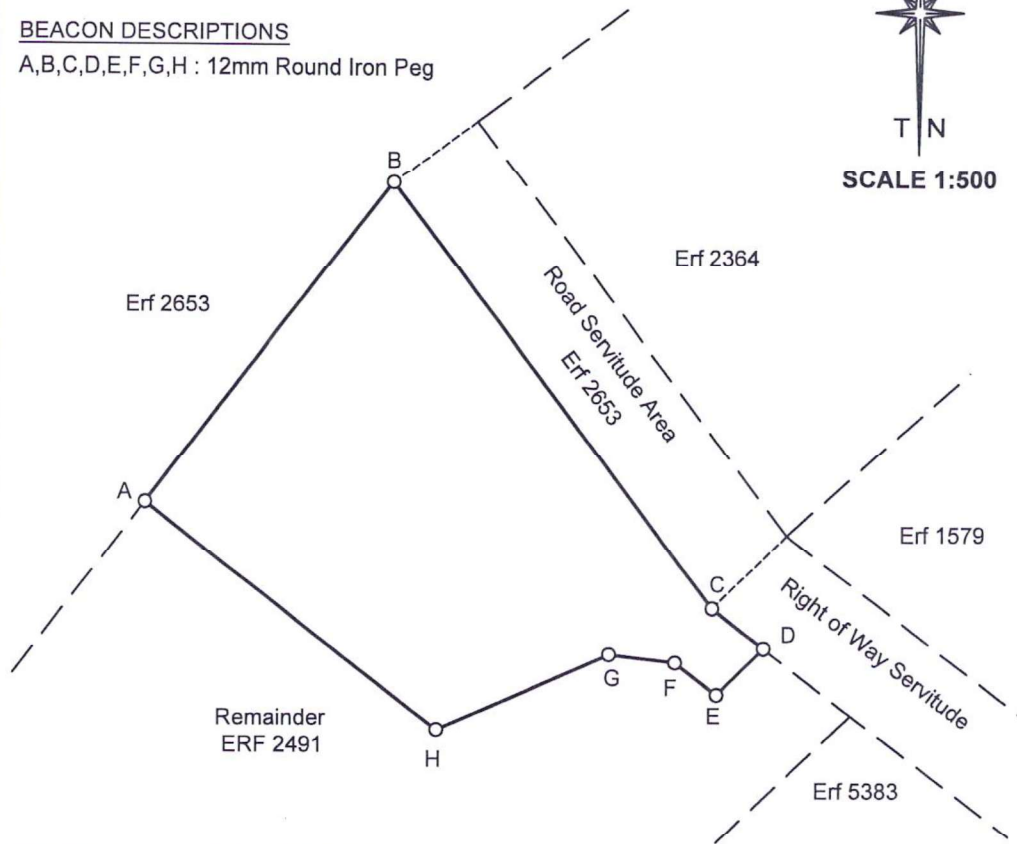
SIDES Metres		ANGLES OF DIRECTION	CO-ORDINATES Y System: WG 23° X		S.G. No.
			Constants ±0,00	±0,00	
AB	31,15	217.50.20	A	+72 863,62	+3 769 878,89
BC	40,99	323.00.00	B	+72 844,51	+3 769 854,29
CD	5,00	307.22.10	C	+72 819,84	+3 769 887,03
DE	5,05	45.30.40	D	+72 815,86	+3 769 890,07
EF	4,06	127.22.20	E	+72 819,47	+3 769 893,60
FG	5,17	96.53.00	F	+72 822,69	+3 769 891,14
GH	14,46	66.23.40	G	+72 827,82	+3 769 890,52
HA	28,49	127.41.40	H	+72 841,08	+3 769 896,31
TERGNIET RES		3322 - 444		+75 707,82	+3 771 618,81
ZANDHOOGTE WT		3322 - 434		+75 375,40	+3 769 892,37

Approved

for
Surveyor-General

BEACON DESCRIPTIONS

A,B,C,D,E,F,G,H : 12mm Round Iron Peg



The figure A B C D E F G H
represents 940 square metres of land being

ERF 5388 (a portion of Erf 2491) **GROOT BRAKRIVIER**

Situated in the Municipality and Administrative District of Mossel Bay, Western Cape Province

Surveyed in May 2022 and April 2023 by me

T. VISAGIE (PLS 1036)
Professional Land Surveyor

This Diagram is annexed to	The original diagram is	File No. Mos. B 137
No. :	S.G. No. 7018/1997	S.R. No. :
dated	Deed of Transfer	Comp. : AL-1ABD (3576)
i.f.o.	No. T8545/1998	
Registrar of Deeds		LPI C0510003