

JOB 8749

S.G. No.

292/2022

Approved

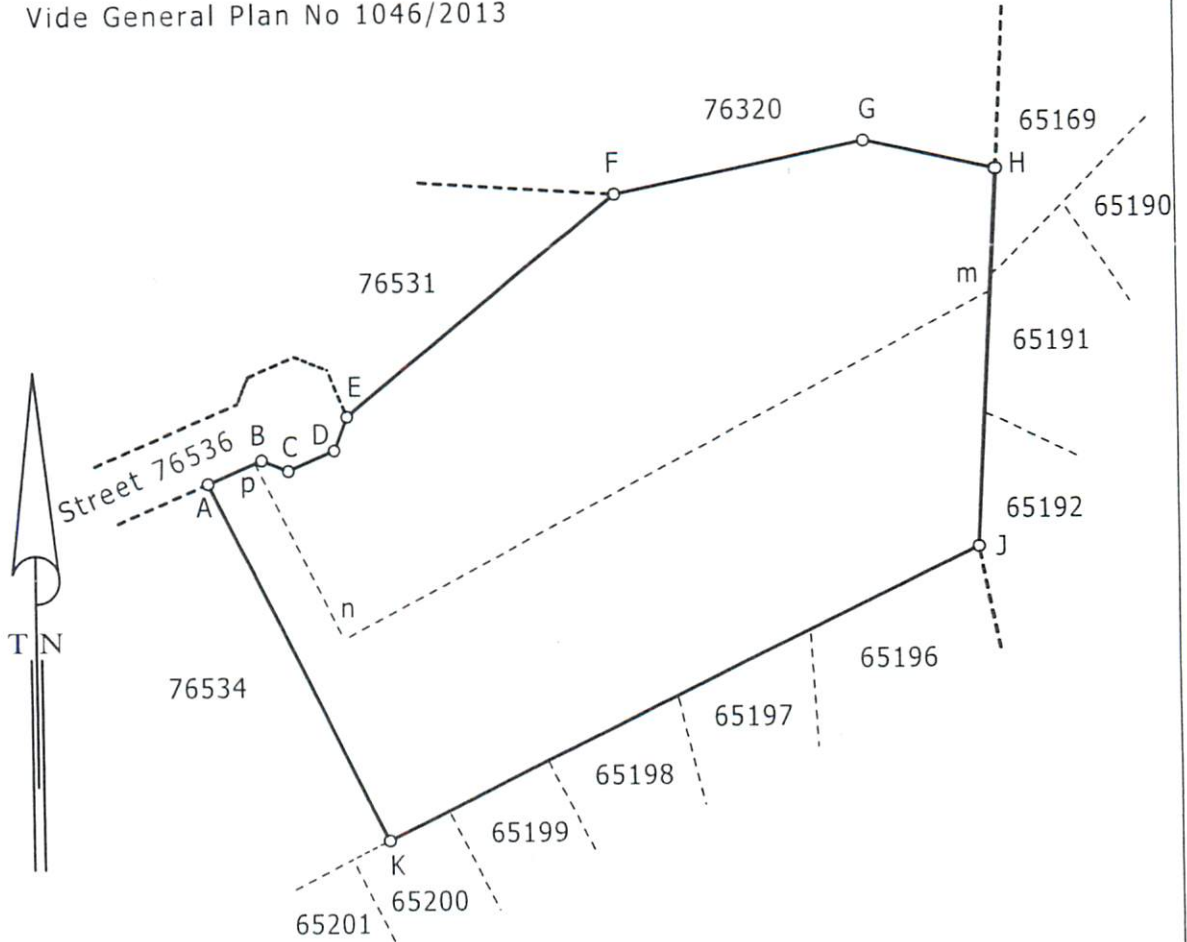
for *Mark*

Surveyor-General  
2022-05-24

CERTIFIED COPY FOR REGISTRATION  
 FOR SURVEYOR GENERAL  
 DATE: 2022-05-31

Component Properties

1. The figure B C D E F G H m n p represents Erf 76532 East London  
Vide General Plan No 1046/2013
2. The figure A p n m J K represents Erf 76533 East London  
Vide General Plan No 1046/2013



Scale 1/1500

The figure A B C D E F G H J K represents 1,2716 hectares of land being

Erf 93207 East London and comprises 1 - 2 as quoted above

situate in the Buffalo City Municipality  
Administrative District of East London  
Province of the Eastern Cape  
Compiled in April 2022 by me

*Charles Hansen*

Charles Hansen (GPrLS 1362)  
Professional Land Surveyor

EXEMPT FROM PROVISIONS OF SECTIONS 56(1)(a)  
 OF THE SPLUMA BY-LAW:  
 Buffalo City Metropolitan Municipality 2016  
 DATE: 12 May 2022

This diagram is annexed to

The original diagrams are  
as quoted above

File No. Eldn816/73  
S.R. No. Compiled  
Comp. No. CQSZ-4112 (M332)

No.  
dated  
i.f.o.

Registrar of Deeds

General Plan No 1046/2013  
LPI C0230004

Erf 93207 East London