

MAIN FIGURE					
SIDES (metres)	ANGLES OF DIRECTION	SYSTEM WG.27° CO-ORDINATES (metres)			
		Y	X		
A-B	45.39	286.09.40	A	- 85 453.25	+ 3 647 683.87
B-C	49.53	258.28.30	B	- 85 496.85	+ 3 647 696.50
C-D	25.85	282.30.50	C	- 85 545.38	+ 3 647 686.61
D-E	75.80	2 59.00	D	- 85 570.71	+ 3 647 692.23
E-F	206.77	63.32.50	E	- 85 566.78	+ 3 647 768.03
F-G	53.28	153.32.40	F	- 85 381.66	+ 3 647 860.14
G-H	24.56	190.34.40	G	- 85 353.42	+ 3 647 803.40
H-J	12.10	149.33.00	H	- 85 357.93	+ 3 647 779.25
J-K	13.02	108.24.30	J	- 85 351.80	+ 3 647 768.62
K-L	56.55	159.01.40	K	- 85 339.45	+ 3 647 764.71
L-M	68.08	251.56.10	L	- 85 319.21	+ 3 647 711.91
M-A	69.66	264.17.30	M	- 85 383.94	+ 3 647 690.80

DESCRIPTION OF BEACONS	
E, RM4, RM5	12mm Round iron peg in concrete
All other beacons are	12mm Round iron pegs

(EAST LONDON ALLOTMENT AREA)
GENERAL PLAN No. / 2013
OF
SUBDIVISIONS OF ERF 76524 EAST LONDON



VIDE DIAGRAM No.
 DEED OF TRANSFER No.
 AND COMPRISING SEVEN ERVEN, NUMBERED
 76530 - 76536
 SITUATE IN THE BUFFALO CITY METROPOLITAN MUNICIPALITY
 IN THE ADMINISTRATIVE DISTRICT OF EAST LONDON
 PROVINCE OF THE EASTERN CAPE
SCALE 1 : 500

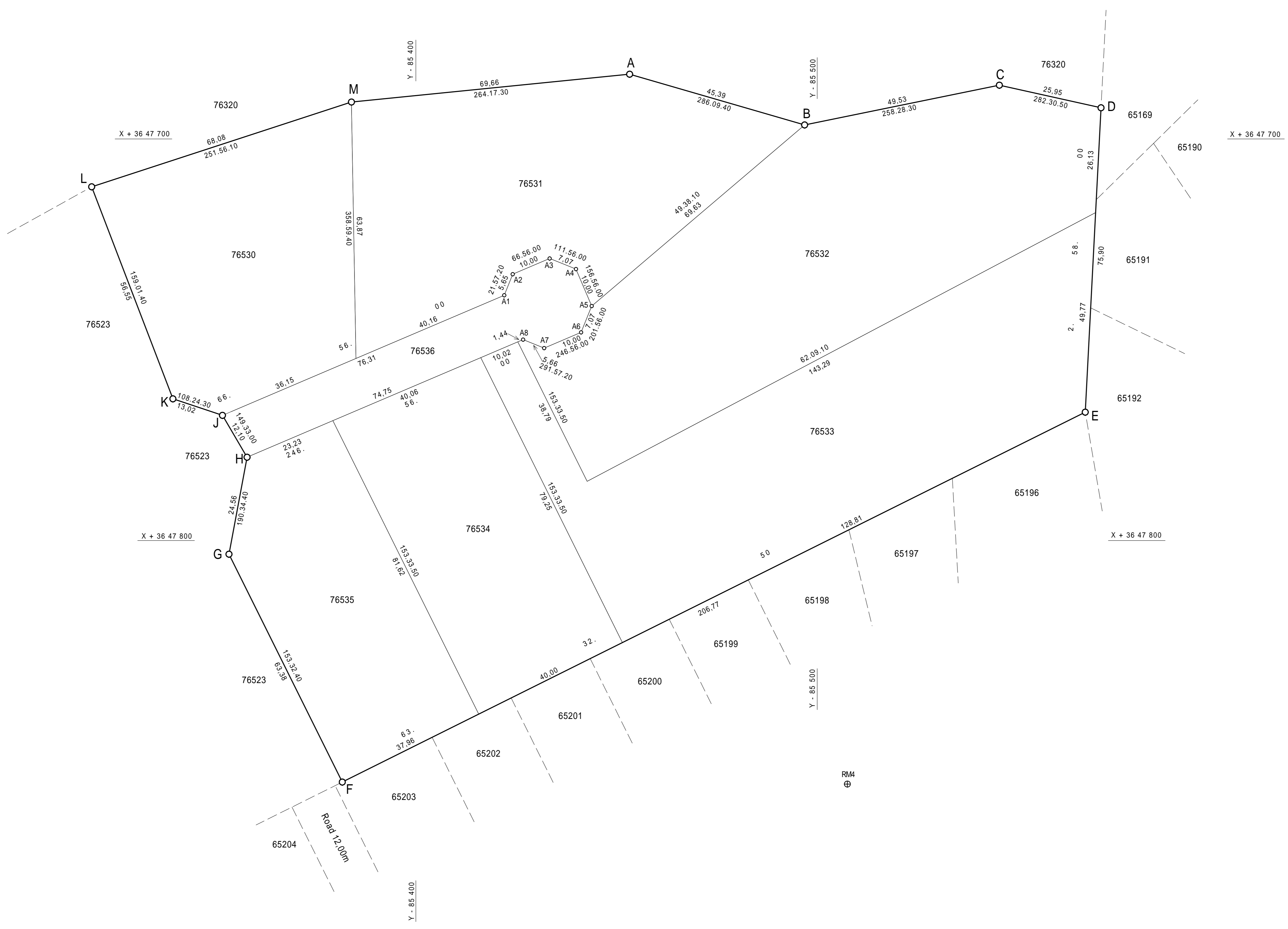
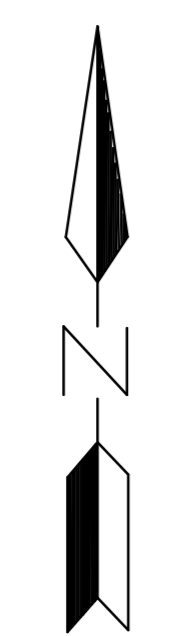
S.G. No. /2013
 Approved :
 for Surveyor-General
 Approved in terms of
 Section 15 of the
 Land Use Planning Ordinance
 No.15 of 1985
 REF. 12407/TP
 Date : 2011-08-29

TRIGONOMETRICAL BEACONS			
CONSTANTS	Y	X	
Vincent Gardens (No. 373)	- 85 410,60	+ 3 649 936,87	⊕
Newam (No. 426)	- 84 388,91	+ 3 649 542,45	⊕

REFERENCE MARKS			
CONSTANTS	Y	X	
RM4	- 85 507,51	+ 3 647 860,64	⊕
RM5	- 85 277,25	+ 3 647 939,33	⊕

CO - ORDINATES			
CONSTANTS	Y	X	
A1	- 85 422,01	+ 3 647 738,92	⊕
A2	- 85 424,12	+ 3 647 733,68	⊕
A3	- 85 433,32	+ 3 647 729,76	⊕
A4	- 85 439,88	+ 3 647 732,40	⊕
A5	- 85 443,90	+ 3 647 741,60	⊕
A6	- 85 441,16	+ 3 647 749,16	⊕
A7	- 85 431,96	+ 3 647 752,08	⊕
A8	- 85 426,71	+ 3 647 749,96	⊕

ERF AREAS	
ERF NUMBERS	SQ METRES
76530	3540
76531	4788
76532	6495
76533	6221
76534	3217
76535	2991
76536	1245



ENDORSEMENTS					
No.	AMENDMENT	ADDITION	AUTHORITY	INTD	DATE

S.G. OFFICE NOTES

SURVEYED IN MAY 2007 & SEPTEMBER 2013
 by me
 N.R. HENDERSON (PLS 0808)
 Professional Land Surveyor
 File No.
 Survey Records No. :
 SRE /2013
 Compilation
 COSZ-23 (M327)
 COSZ-41 (M330)
 COSZ-4112 (M332)

RM5
 ⊕